

WELCOME TO BENTONVILLE

.....

EAT. SEE. DO.



EAT & DRINK

COFFEE

211 Cafe | 405 South Main Street, Located inside the Library

(479) 271-3192

Mauricio sold everything & moved his family from Guatemala to encourage community in every sip. Cafe 211 is born by a love and passion for coffee.

MON - THU: 9AM - 6PM FRI: 9AM - 5PM SAT: 9AM - 3PM

Airship Coffee | 1000 SE 5th Street - 802 NW A Street (Pumphouse)

(479) 268-6376

Creating, Roasting and Brewing amazing coffees for your enjoyment. Drink Up, Be Lifted! Try the new location within the Coler Mountain Bike Preserve.

5th Street Open Daily: 7AM - 7PM Pumphouse Open Daily at 7AM Coffee at Coler: 8AM - 5:30PM

Heroes Coffee Company | 124 SW 8th Street

(479) 273-7770

Wake up. Do Good. Repeat. For every bag of Do Good Coffee sold, they donate a dollar to a local nonprofit.

MON - FRI: 6:30AM - 7PM SAT: 7AM - 7PM

Onyx Coffee Lab | 100 NW 2nd Street, Ste. 106

(479) 715-6492

Cafe and Roastery Specializing in Coffee Profiling and Brew Methods. This coffee bar produces beautiful toast, croissants, and desserts.

Open Daily: 6:30AM - 8PM

The Meteor Café | 401 SE D Street

(479) 268-4747

A top-shelf coffee bar and cafe offering signature baked goods, inspired food, and drinks. You're going to want to try the breakfast tacos.

Open Daily: 7AM - 10PM



DRINKS

Bar + Lounge at The Hive | 200 NE A Street

(479) 286-06575

Choose from a rotating selection of seasonal cocktails or explore the bottled beer list to discover a new favorite brew, including some local favorites. The bartenders at The Hive bring new life to craft cocktails with farm fresh ingredients and creative interpretations of classic favorites.

Lounge Open Daily: 2PM - Midnight

Bentonville Brewing | 901 SW 14th Street

(479) 903-7330

Bentonville's very own production craft brewery and tasting room located in the heart of Bentonville! Home of the (in)famous Homewrecker IPA. Family (and dog!) friendly with great outdoor space.

MON: 1PM - 10PM TUE - WED: 11AM - 10PM THU - SAT: 11AM - 11PM SUN: 11AM - 10PM

Bentonville Taproom | 109 S Main Street

(479) 553-7577

Local Craft Beer, hard cider, wine, music! Great location just off the Square.

MON - THU: 2PM - 10PM FR - SAT: 12PM - 12AM SUN: 12PM - 10PM

Ramo d'Olivo | 104 SE 6th Street

(479) 715-6053

Northwest Arkansas' premier wine bar offering over 200 varieties by the bottle as well as craft beers from some of the top local breweries in the area.

MON - THU: 11AM - 9PM. FRI - SAT: 11AM - 10PM

Scotch & Soda | 121 W Central Avenue

(479) 319-6874

Contemporary tavern with build-your-own whisky flights, cocktails, charcuterie & other bar bites. Named to the 40 Best Whisky Bars in the US by Whisky Advocate.

MON - THU: 4PM - 12AM FRI - SAT: 4PM - 1AM

Tower Bar at the Momentary | 507 SE E Street

(479) 367-7500

In the evening, it becomes the place in Bentonville to enjoy a drink with friends while enjoying stunning view of Bentonville. The menu offers a rotating seasonal menu of craft cocktails, spirits, wines and whiskeys you can't find anywhere else in Arkansas.

TUE - THU: 5PM - 10PM FRI - SAT: 5PM - 12AM



The Undercroft | 201 NW A Street

(479) 445-6065

Through a side archway simply marked "bar" or the basement door marked "coatroom," one discovers a seductive, hidden cocktail bar beneath a historic church. Enjoy beautifully crafted cocktails and select plates from The Preacher's Son menu during your time spent here.

SUN - THU: 5PM - 9PM FRI - SAT: 5PM - 10PM

SWEETS

Butter Scotch Bakery & Bar | 104 E Central Avenue

(479) 367-2597

You can have coffee and tea with delicious French pastries, cocktails inspired by desserts, and desserts inspired by cocktails!

WED - SUN: 7:30AM - 10PM Upstairs Bar + Speakeasy WED - FRI: 4PM - 12AM SAT - SUN: 12PM - 12AM

Markham and Fitz | 8th Street Market - 801 SE 8th Street, Suite 45

(479) 321-4926

Experience chocolate at its finest at this dessert bar where single origin chocolate comes to life through drinks, dessert, confections, and cocktails.

MON: 12PM - 6PM TUE - WED: 12PM - 8PM THU - SAT: 12PM - 10PM SUN: 12PM - 5PM

Olly Makes Bakery | 220 N Main Street

(479) 321-2372

Wholesome baked goods that are naturally gluten free and made with predominately organic ingredients.

WED - SAT: 8AM - 2PM

Spark Café Soda Fountain | 105 N Main Street

(479) 273-1329



The Spark Café Soda Fountain is a tribute to Sam Walton's love of ice cream. The café proudly serves Yarnell's, a family brand made in Searcy, Arkansas, not far from the Walmart Distribution Center. When you visit, you'll notice a flavor in the scooping bin that looks VERY Walmart: Spark Cream. Custom-made for customers of the Spark Café, it's a rich, flavorful ice cream in Walmart colors of blue and yellow.

Open Daily: 12PM - 9PM

Superfine Sweet Shoppe | 215 S Main Street

Hand-scooped, premium ice cream, specialty desserts and made-to-order cakes

TUE - THU: 5PM - 9PM FRI: 2PM - 10PM SAT: 12PM - 10PM SUN: 12PM - 5PM

Sweet Dream Creamery | 213 NE A Street

(720) 232-1101

A craft ice cream parlor (aka Food Truck!) specializing in unique flavors and fresh, local ingredients in Northwest Arkansas.

TUE - SUN: 11AM - 9PM

Trash Creamery | 401 SW A Street, Suite 101

(479) 367-2412

A funky little place with really good ice cream. Play mixologist with an array of both traditional and totally unique add-ins called "Trash." The process is simple; choose base, pick a vessel, trash it up!

Open Daily: 12PM - 10PM



CO-OP Ramen (*Asian*) | 8th Street Market - 801 SE 8th Street

(479) 250-0474

An Ozark Ramen House located in 8th Street Market. Guests can look forward to experiencing authentic Japanese flavors in a modern space at an approachable price.

Open Daily: 11AM - 8PM

Lady Slipper (*Shareable Plates*) | 138 SW 2nd Street

(479) 715-8499

A speakeasy lounge and restaurant situated in the basement of Bentonville's historic Massey building, its unassuming location invites you to find it for yourself. Once inside, its intimate interior filled with rare art and unexpected décor begs you to stay awhile.

TUE - THU: 4PM - 11PM FRI - SAT: 4PM - 12AM

LOUISE at Thaden Field (*American*) | 2205 SW I Street

(479) 250-0477

LOUISE is a modern cafe located in Thaden Fieldhouse that serves diner-style breakfast, brunch and lunch. LOUISE has both indoor and outdoor seating facing the runway, providing incredible views of planes taking off and landing as you enjoy a great meal!

Open Daily: 8AM - 3PM

The Preacher's Son (*Fine Dining*) | 201 NW A Street

(479) 445-6065

Led by Executive Chef Neal Gray, The Preacher's Son offers unique and sustainably-sourced dinner service in a thoughtfully-restored historic church just steps from the Bentonville City Square. With an extensive wine list and incredible service, The Preacher's Son is the perfect setting to celebrate life's moments - both big and small - and the seasonality of Northwest Arkansas's finest ingredients.

MON - THU: 5PM - 9PM FRI - SAT: 5PM - 10PM

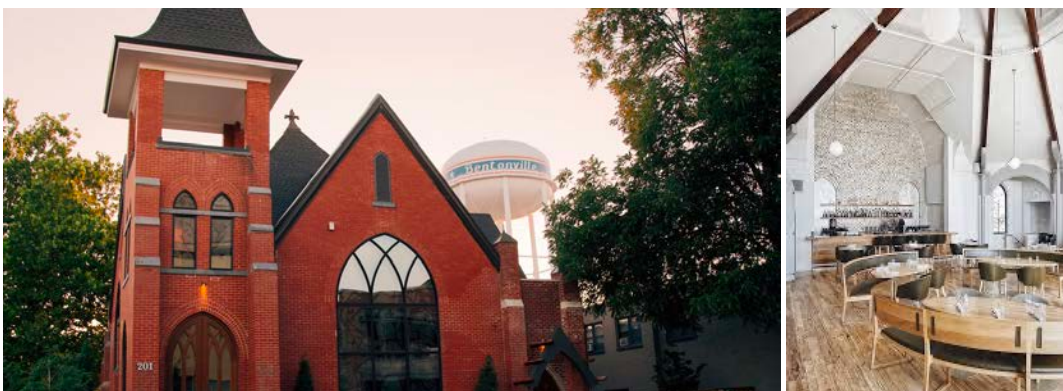
Reservations Recommended

Sunny's (*Healthy*) | 110 NW 2nd St., Ste. 106

(479) 431-2223

A health-forward restaurant partnering with a community of conscious local farmers serving a menu full of ingredients you can pronounce.

Open Daily: 7:30AM - 2PM



DOWNTOWN AREA RESTAURANTS

Azul Tequila Bistro (*Mexican*) | 111 N Main Street

(479) 553-7184

The restaurant offers à la carte service, with exquisite Mexican food that will make your mouth water for more!
A great place to go out on the town or catch up over drinks after work – you'll feel right at home as soon as those doors open up in this cool cantina atmosphere where we serve some of Mexico's finest ingredients alongside boozy beverages.

SUN - THU: 11AM - 9PM FRI - SAT: 11AM - 10PM

Bar Cleeta (*Fine Dining*) | 110 NW 2nd Street, Ste. 110

(479) 553-7006

Evoking metropolitan dining, the menu transports and encourages customization, allowing the diner to curate their own dining experience. Serving antibiotic & hormone-free meat and sourcing locally whenever possible, the menu features old world culinary techniques with new world flavors. Fresh oysters, caviar service, charcuterie & cheese and an array of shared plates span the menu meant for sharing.

The beverage program assembles eclectic wines from around the world, with less focus on pedigree and more focus on pairability with the cuisine. Inspired by the season, craft cocktails are composed with classic recipes, fresh ingredients and pantry spices.

TUE - THU: 5PM - 8:30PM FRI - SAT: 5PM - 8:30PM

Reservations Recommended

Bentonville Taco & Tamale Co. (*Tex Mex*) | 101 W Central Avenue

(479) 448-4480

Preparing your favorite Tex-Mex inspired dishes with local, seasonal, and Arkansas food culture influences. These vibrant dishes are a true Southern/Mex Mashup. Introducing your new favorite food group – Ark-Mex.

SUN - THU: 11AM - 9PM FRI - SAT: 11AM - 10PM

BLU Fish House (*Seafood & Sushi*) | 607 SE 5th Street

(479) 273-5400

We fly fish in daily from both the coast & the Gulf! Our building hosts a restaurant, sushi bar, and a fish market.

TUE - THU: 11AM - 2PM, 5PM - 8PM FRI: 11AM - 2PM, 5PM - 9PM SAT: 11AM - 9PM

CONIFER (*Fine Dining*) | 321 SE 2nd Street, Suite 100

(479) 203-5999

Award winning Chef Matthew Cooper prepares a unique, farm fresh & purposeful menu at his restaurant CONIFER in Bentonville, AR. The CONIFER menu will change seasonally and even hyper seasonally. CONIFER is 100% gluten free.

MON - SAT: 5PM - 9PM Sunday Supper: 5PM - 8PM

Reservations Recommended

Crepe's Paulette (*Counter Service*) | 100 SW 8th Street

(479) 250-1110

Authentic and fusion, sweet and savory handheld crêpes served with a smile and a side of quirk.

MON - FRI: 10AM - 7PM SAT - SUN: 9AM - 4PM

The First Seat Pub & Grill (*American*) | 106 SW 2nd Street (479) 250-9149

Locally-owned pub and grill with a casual atmosphere. You'll find burgers, sandwiches and salads on the menu and craft beers on tap. Next door, Barley & Vine, serves pizza and offers a wide selection of draft beers and wine.

SUN - WED: 11AM - 11PM THU - SAT: 11AM - 1AM

The Flying Fish (*Seafood*) | 109A NW 2nd Street (479) 657-6300

Laid-back eatery serving seafood with a Cajun twist, from fried catfish to po' boy sandwiches.

Open Daily: 11AM - 9PM

The Hive at 21c (*Fine Dining*) | 200 NE A Street (479) 286-06575

Located in Bentonville's award-winning 21c Museum Hotel, The Hive showcases the unique culinary identity of Arkansas.

Breakfast Served Daily: 7AM - 10AM Lunch Served MON - FRI: 11AM - 2PM Brunch Served SAT - SUN: 11AM - 2PM
Dinner SUN - THU: 5:30PM - 9PM FRI - SAT: 5:30PM - 9:30PM

Reservations Recommended

Oven and Tap (*Pizza*) | 215 S Main Street (479) 268-5884

Named for its custom built wood fired oven & tap wall, Oven & Tap is located just off the Bentonville square. It's a relaxed place for wood-fired pizzas, sandwiches & Southern-inspired fare, plus a bar & craft beer. Try the chicken sammie.

TUE - SAT: 11AM - 10PM

Ozark Mountain Bagel Co. (*Sandwiches*) | 105 W Central (479) 367 - 2629

Authentic New York style bagels in Northwest Arkansas! These bagels are handcrafted from scratch, then water boiled and baked fresh each day. Spreading joy, love, and cream cheese.

TUE - FRI: 7AM - 1PM SAT - SUN: 7AM - Until Sold Out

Pedaler's Pub (*Pizza*) | 410 SW A Street (479) 268-3285

The Pedaler's pub specializes in wood fired pizzas, salads, sandwiches, and an ever-changing specials menu. The "pub in the Hub" is located along the Bentonville trail system on SW A street and has a strong passion for cycling and adventure.

TUE - SUN: 11AM - 11PM

Snack Lab (*Snacks, Grab & Go*) | 102 SE 28th Street, #2 (479) 268-5353

The food you eat is the fuel that gets you through the day, so what you put into your body matters. For the times when you need a quick, nutritious bite on the go, you can count on Snack Lab. Gluten-Free, Vegan, Vegetarian, Keto, Whole30, Allergy-Friendly Options

MON - FRI: 7:30AM - 6PM SAT: 8AM - 4PM

Table Mesa Bistro & Bakery (*Multicultural*) | 108 E Central Avenue (479) 715-6706

Located in the heart of Bentonville historic district, Table-Mesa features Modern Latin Cuisine with multicultural offerings, seasonal ingredients and a broad appeal.

MON - THU: 7AM - 9PM FRI - SAT: 7AM - 9:30PM SUN: 9AM - 3PM

Tavola Trattoria (*Italian*) | 108 SE A Street

(479) 715-4738

From the owners of Table Mesa Bistro comes a casual Italian Trattoria. Come by and discover the soul-satisfying riffs on Italian and Mediterranean cooking.

MON - THU: 11AM - 9PM FRI - SAT: 11AM - 9:30PM SUN: 10AM - 8PM

Thai Kitchen (*Thai*) | 707 SW A Street

(479) 464-7288

Unassuming eatery dishing up curries, salads, spring rolls & other Thai delicacies.

MON - SAT: 11AM - 2:30PM, 4:30PM - 8:30PM

Tusk and Trotter (*American*) | 110 SE A Street

(479) 268-4494

Gastropub offering a locally sourced, seasonal menu & craft beers in a casual, rustic-chic setting.

MON - FRI: 11AM - 9PM SAT - SUN: 10AM - 9PM

Wright's Barbecue (*BBQ*) | 208 NE 3rd Street

(479) 313-8618

Wright's has embraced the barbecue culture by using methods that require dedication, hard work, and love for smoked meat. They source pecan wood from downed central Arkansas trees. From the start each week, to the end, the fires never stop burning. An overnight process that delivers fresh food when you need it.

TUE - SAT: 11AM - 8PM or until the food runs out!

Yeyo's El Alma de Mexico (*Mexican*) | 8th Street Market - 801 SE 8th St., Suite 41

(479) 657-6954

Yeyo's started with family. Rafel & Roman moved here with their family about 10 years ago. Their dad, Yeyo, encouraged them to start one of the first food trucks in Bentonville and it was a huge success very quickly. About five years later they had outgrown the truck and expanded into a state of the art restaurant in 2018. When you're downtown, look for the Yeyo's Food Truck near the Bentonville Square.

TUE - THU: 11AM - 9PM FRI: 11AM - 10PM SAT: 10AM - 10PM SUN: 10AM - 3PM

8th Street Market | 801 SE 8th Street

8th Street Market is a community-focused food hub, where a spirit of creativity meets entrepreneurship, growing a group of tenants that serve one another as well as the community.

By supporting small and midsize local farmers, 8th Street Market gives back in more ways than one, pairing culinary excellence and experiences to feed a cycle of growth for the area's agricultural producers and food entrepreneurs.

Gatherings are grounded in a commitment to community, a shared love of food and drink, and the belief that together, we can all become better.

Hours Vary by Merchant



SEE



Crystal Bridges Museum | 600 Museum Way

(479) 418-5700

Crystal Bridges Museum of American Art welcomes all to celebrate the American spirit in a setting that unites the power of art with the beauty of nature. We explore the unfolding story of America by actively collecting, exhibiting, interpreting, and preserving outstanding works that illuminate our heritage and artistic possibilities.

Crystal Bridges Trails and Grounds are open from sunrise to sunset daily and during museum hours.

MON: 11AM - 6PM WED: 11AM - 6PM THU - FRI: 11AM - 8PM SAT - SUN: 10AM - 6PM

Learn more about upcoming programs and events at www.crystalbridges.org

The Momentary | 507 SE E Street

(479) 367-7500

The Momentary is a contemporary art space satellite to Crystal Bridges Museum of American Art in downtown Bentonville. Situated along the Razorback Regional Greenway near 8th Street Market, we've transformed a decommissioned 63,000-square-foot cheese factory into a multidisciplinary space for visual and performing arts, culinary experiences, festivals, artists-in-residence, and more. The mission of the Momentary is to champion contemporary art's role in everyday life.

The Momentary was founded by the Walton family, based on the vision of Tom, Olivia and Steuart Walton. The Walton Family Foundation is supporting this project as a way to enhance the quality of life in Northwest Arkansas. Its commitment to cultivating arts and cultural experiences provides more opportunities for education, engagement, and enjoyment in our region.

Explore the galleries, catch a performance, enjoy a savory bite or refreshing drink, or just hang out. The Momentary welcomes all with free general admission. The Momentary Green is open daily. Tavares Strachan's [You Belong Here](#) is illuminated nightly, starting at dusk. To learn more visit the website at www.themomentary.org

SUN: 10AM - 6PM TUE - THU: 10AM - 6PM FRI - SAT: 10AM - 8PM



21 C Museum Hotel | 200 NE A Street

(479) 286-6500

Located on the northeast corner of the Bentonville town square and a short walk to Crystal Bridges Museum of American Art, 21c Museum Hotel Bentonville is a 104-room boutique hotel, contemporary art museum, cultural center and home to The Hive restaurant.

Galleries are open daily and exhibitions rotate, so make plans to visit often.

The Walmart Museum | 105 N Main Street

(479) 273-1329

Visit the 240 S Main Street location during renovation

The Walmart Museum, including Walton's 5&10, is closed while they undergo an extensive renovation. To ensure there is as little disruption as possible, we are excited to welcome visitors to our temporary home at The Walmart Museum Heritage Lab.

We've created this temporary location to share our story. We call it our "Lab" because it's where we test new technologies, new exhibits, and new ways to share Walmart's heritage. As you go through the Lab space, take your time to try new things and to share your thoughts with us so that the "new Walmart Museum" on the square can be the best that it can be.

MON - SAT: 9AM - 7PM SUN: 12PM - 6PM

Visit www.walmartmuseum.com or call (479) 277-8923

Museum of Native American History | 202 SW O Street (479) 273-2456

First established in a downtown location in 2006 as the Museum of Native American Artifacts, the collection quickly outgrew the space and MONAH opened its current doors in June of 2008. Founded by David Bogle, a registered member of the Cherokee Nation born and raised in Bentonville, the museum houses over 10,000 of the finest Native American artifacts. The museum features Bogle's private collection, along with a number of collections donated and on loan to the museum for display.

TUE - SAT: 11AM - 5PM

Compton Gardens | 312 N Main Street

(479) 254-3870

Nestled in the heart of downtown Bentonville, the Compton Gardens includes over 11 acres of native trees, plants, and gardens, you're sure to enjoy the serenity boasted by Compton Gardens.

The Compton Gardens & Neil Compton Exhibit Tour gives individuals and groups the chance to explore home and gardens of Dr. Compton, one of the region's great architectural gems. The house includes an exhibit hall highlighting Dr. Compton and his dedication to the conservation and preservation of the region's natural beauty.

Open to public daily, dawn to dusk; Please Call for a Tour Schedule

Peel Mansion & Heritage Gardens | 400 S Walton Blvd.

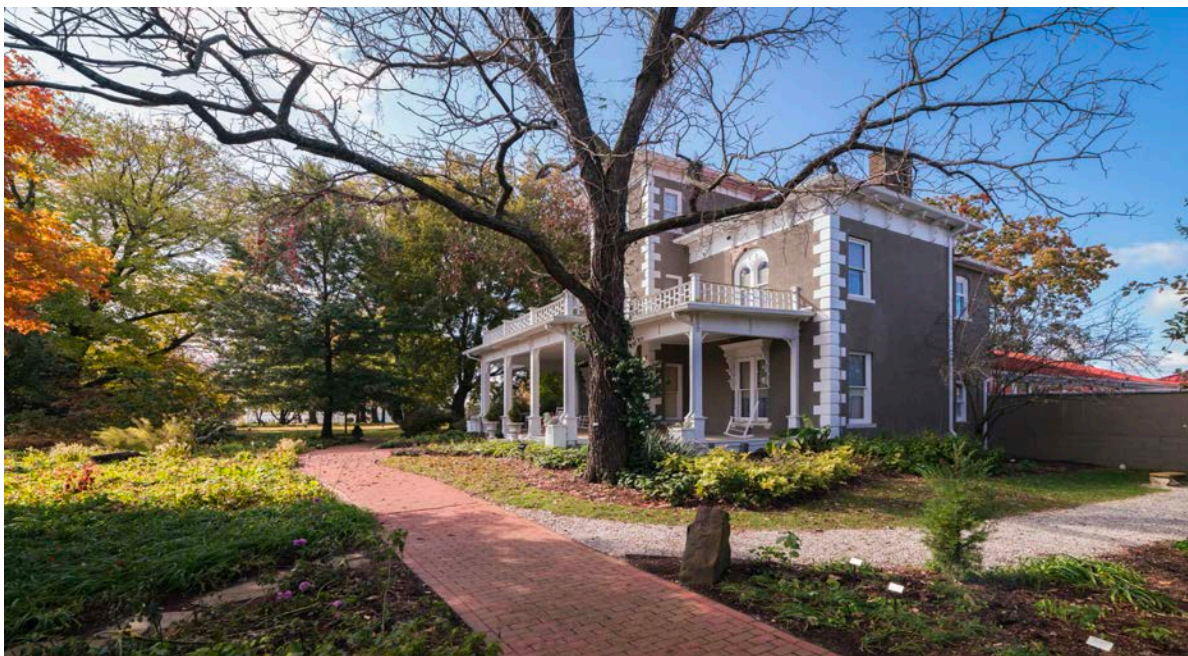
(479) 273-3636

A pioneer businessman, lawyer, father of nine, and the first native Arkansan elected to the United States Congress, Colonel Samuel West Peel built this extraordinary Italianate mansion on the outskirts of beautiful Bentonville, Arkansas in 1875. This idyllic home once stood as a working farmstead surrounded by 180 acres of apple orchards, as well as a large vegetable garden, and now serves as an immaculate display of the era in which it was built.

The gardens surrounding the museum invite visitors to slow down, take in the scenery and view the beautiful flowers, plants, and trees. The mansion is full of fun facts and tons of history to keep visitors entertained and curious. Peel Mansion Museum tours can be enjoyed by booking as a group or through a self-guided tour, where you can enjoy the property at your leisure.

Walk-up tours begin every thirty minutes and the last tour begins at 2:30PM.

TUE - SAT: 10AM - 3PM



DO



Phat Tire Bike Shop | 125 West Central Avenue

(479) 715-6170

With a variety of bikes and accessories, the team at Phat Tire also offers rentals, service and tune ups, and can suggest great trails.

MON - FRI: 10AM - 7PM SAT: 9AM - 6PM SUN: 11AM - 5PM

Gearhead Experience Center | 501 SW A Street

(479) 657-2135

Looking to explore all the best trails Northwest Arkansas has to offer? Do it on the best form of transportation in NWA—a Specialized E-Bike. You'll be zipping around all the local trail systems in a flash. The shop is located just ½ mile south of the Downtown Bentonville Square providing easy access to both the Slaughter Pen and Coler Mountain Bike Preserve Trail Systems.

Open Daily: 9AM – 5PM

Coler Mountain Bike Preserve is located about a mile west of Downtown Bentonville on land designated as a mountain bike preserve. The trails feature multiple flowy jump lines and challenging technical rocky sections that culminate at "The Hub" near the top of the mountain. From there you can choose which trail to take and the level of difficulty. If you are an expert level downhill or enduro rider try the "Hammer" -- a double black alternate line featuring a 12-foot drop into a valley setting you up for 10-foot step-up jumps and two more large drops.

Razorback Regional Greenway Completed in 2015, the Razorback Regional Greenway spans a large portion of Northwest Arkansas, connecting the bustling hubs of Bentonville and Fayetteville with the growing suburban communities of Rogers, Springdale and Lowell in-between. Running for 36 miles, the trail is entirely off-road, with the exception of a few short sections of adjacent sidewalk and protected bike lane throughout and a brief share-the-road stretch in central Bentonville.

The trail runs through the downtown districts of Fayetteville, Bentonville and Springdale, providing direct access to various civic, entertainment and retail destinations. Other highlights along the trail's route include the University of Arkansas and Northwest Arkansas Mall in Fayetteville, the Crystal Bridges Museum of American Art in Bentonville, and both Mercy Hospital Northwest Arkansas and Pinnacle Hills Promenade in Rogers.

Bike Bentonville is a great resource for trail locations and conditions. <https://www.visitbentonville.com/bike/>

OZ Trails is your best site for all things Mountain Biking. <https://oztrailsnwa.com/>

Rural Recreational Roads has a comprehensive listing of time-tested gravel routes. <https://www.arkansasr3.com/>

Climb Bentonville | 801 SW 14th Street

(479) 326-8521

A premier climbing and fitness facility located in the heart of Bentonville.

MON - SAT: 9AM - 9PM SUN: 11AM - 6PM

Meteor Guitar Gallery | 128 W Central Avenue, Bentonville

(479) 268-1500

This hundred-year-old movie theater has been turned into an awesome guitar store with over a thousand instruments and amplifiers, one of kind art pieces from many local artists and a live music/movie /party venue that can accommodate 370 people. Events, movies and concerts are hosted year-round. Check out their website for the venue's schedule.

<http://www.meteorguitargallery.com/>

The Quiver Archery Range | 1701 SW F Street

(479) 326-8521

A 70-meter outdoor range with 20 archery lanes for all to enjoy. Our certified archery instructors are here to provide you archery instruction on how to succeed. Equipment is included.

WED - FRI: 2PM - 7PM SAT - SUN: 8AM - 7PM

Skylight Cinema | 350 SW A Street

(479) 367-7629

The theater exhibits first-run movies from major and independent studios and offers a variety of special screenings throughout the year, including sporting events, classic films and other cultural experiences. All six of the theater's auditoria feature state-of-the-art digital projection technology and sound, reserved seating and comfortable rocker or recliner seats.

HOURS VARY BY SHOWINGS <https://www.skylightcinemas.com/>

Thaden Field | 2205 SW I Street

(479) 254-0817

A jumping off point for adventure, the portal to backcountry, a basecamp: Thaden Field, ICAO Identifier (VBT), is the hub of Arkansas' FLY OZ network, Summit Aviation's fix base operation, home of Game Composites, and the flying club's "hideout."

The FIELDHOUSE shelters a flight school, an exhibition hangar, an FAA knowledge testing center, scenic flights, discovery flights, lawn games, fuel, provisions, bikes, and a full-service café, LOUISE. This summer you'll be able to rent a canoe and paddle out on Lake Bentonville.





ESPECIALLY FOR THE KIDS

Buddy Pegs Family Bike Shop | 3605 NW Wishing Springs Drive

(479) 268-4030

Buddy Pegs was started by folks looking to bring the joys of biking to kids and parents. They sell mid-range bikes for adults and entry level bikes for kids and put on a lot of events to get as many families as possible off the couch and outside. They offer private lessons and summer camps. If you want to get your family biking, this is a great place to start!

Scott Family Amazeum | 1009 Museum Way

(479) 696-9280

Founded on the principle that curious, creative community learns together, the Scott Family Amazeum uses a variety of interactive Science, Technology, Engineering, Art and Math (STEAM) activities and experiences to ignite your imagination with hands-on exploration and discovery.

Interactive exhibits, unique pop-up activities, and zinglets (ask a play facilitator) are inspired by the landscape, culture, and innovative spirit of the region. Each experience and activity enable discovery and learning through play. The Amazeum also hosts traveling exhibits from across the country.

MON: 10AM - 5PM WED: 10AM - 7:30PM THU - SAT: 10AM - 5PM SUN: 1PM - 5PM

Reserving timed tickets is recommended. www.amazeum.org

Splash Park/The Rink at Lawrence Plaza | 214 NE A Street

(479) 271-3390

In the summer months, from May to September, this 7,000 square foot facility offers a splash pad. In the winter months, from November to January, the chiller is turned on and the concrete pad is converted into the region's only permanent outdoor ice rink. Bring your family out to Lawrence Plaza to enjoy the park and a great time!

Hours Vary by Season

Strider Bikes | 109 N Main Street

(479) 367-2336

Make plans to visit the ONLY Strider Bikes Shop in America! It's more than just a kids' bike shop, though! They've partnered with local brands to carry gear and swag for riders of all ages, from babies to adults. Yes, we said babies!

WED - SAT: 10AM - 6PM SUN: 10AM - 5PM

SHOPPING

Bentonville Mercantile | 103 SE 2nd Street

(479) 326-0682

The spot for all things local in Bentonville. Shirts, candles, jewelry, art, soap *and more* made by over 60 makers in NWA.

SUN - MON: 10AM - 4PM WED - SAT: 10AM - 6PM

Block Street Records | 100 NW 2nd Street #110

(479) 966-6232

A locally owned indie record shop with new & vintage vinyl, CDs, tapes, t-shirts, posters and more!

MON - THU: 11AM - 7PM FRI - SAT: 11AM - 9PM SUN: 12PM - 6PM

Blue Moon Bentonville | 114 W Central Avenue

(479) 657-6723

A local boutique specializing in apparel, gifts, hair accessories, souvenirs, greeting cards, shoes, purses, jewelry, candles, home decor, baby gifts and much more.

MON - SAT: 10AM - 6PM SUN: 1PM - 5PM

Faherty Brand | 115 W Central Avenue

(479) 448-2070

A family business all about the highest quality of clothing and spreading good vibes. . Sustainability is at the core of Faherty's philosophy.

TUE - SAT: 11AM - 6PM SUN: 11AM - 5PM

LABEL | 120 W Central Avenue

(479) 224-9295

Label features premium denim, apparel, shoes and accessories in a variety of price points and styles.

MON - SAT: 10AM - 7PM SUN: 12PM - 5PM

Oli + Meg | 502 SW A Street, Ste. 2

(479) 685-0221

A gift shop with a fun environment specializing in local artwork, jewelry, kitchenware, pottery, greeting cards, candles, and bathware. They have a great selection of locally made items.

MON - SAT: 10AM - 6PM

Once Upon a Time Books | 116 W Central Avenue

(479) 685-0221

A local, used bookstore with something for everyone.

MON - SAT: 10AM - 7PM SUN: 12PM - 5PM

Rapha Bentonville | 117 W Central Avenue

(479) 339-2366

Rapha is a cycling lifestyle brand focused on road bicycle racing and mountain biking. Riders have instant access to some of the best riding in the area, race viewings, events, and the full range of state-of-the-art Rapha clothing and accessories.

TUE - FRI: 11AM - 7PM SAT: 10AM - 6PM SUN: 11AM - 5PM

Remedy Road | 112 W Central Avenue

(479) 321-1316

A socially-conscious, people-conscious boutique on a mission to not only sell beautiful products, but also to emphasize the artisans who made them.

MON - THU: 10AM - 6PM FRI - SAT: 10AM - 7PM SUN: 1PM - 5PM

Southern Style Children's Boutique | 116 South Main Street

(479) 715-6610

An upscale children's boutique in historic downtown Bentonville. Offering styles that range from southern traditional to modern and preppy, with everything in between.

MON - FRI: 10AM - 5PM SAT: 10AM - 4PM

STRIDER | 109 N Main Street

(479) 367-2336

We love riding bikes and inspiring kids to ride. We build lightweight, all-terrain bikes that develop two-wheeled balance, coordination and confidence in children.

WED - SAT: 10AM - 6PM SUN: 10AM - 5PM

Three Dog Bakery | 113 W Central Avenue

(479) 268-5599

Fresh-baked treats made by real pastry chefs who use simple, healthy, and wholesome ingredients. Check out the seasonal treats, gourmet dog pastries, and one-of-a-kind canine cakes you can have personalized for your pup's special occasion. Who says you need to have a reason to spoil your dog? This is Roger's favorite spot downtown.

MON - SAT: 10AM - 7PM SUN: 12PM - 5PM



SPA & SALON

Due to changing hours of operation, please call or check social media to confirm opening dates and times.

District | 502 SW A Street, Suite 2

(479) 877-7538

A full-service Hair Salon in the heart of downtown Bentonville.

www.facebook.com/districtsalon

MON - FRI: 10AM - 6PM SAT: 10AM - 2PM

Hudson Hawk | 326 SW A St #100

(479) 802-4640

Hudson / Hawk Barber & Shop is the barbershop for all generations, providing salon-quality services in a masculine environment. Visit the barbershop for a men's haircut, razor shave, fade, beard trim or wax.

MON - TUE: 9AM - 6PM WED - THU: 9AM - 8PM FRI: 9AM - 6PM SAT: 8AM - 4PM

Illume Barber Shop | 100 SW 2nd Street

(479) 318-4088

A barber shop with modern & classic men's grooming services from a talented team of barbers.

MON - SAT: 8AM - 7PM

Premier Spa | 901 SE Plaza Avenue, Suite 5

(479) 273-3376

Nestled inside the walls of Premier Dermatology, The Spa at Premier is a tranquil environment sure to create a relaxing experience. Walk-in or same-day availability is very limited. It is highly suggested to schedule services in advance.

MON: 8AM - 5PM TUE: 9:30AM - 5PM WED: 8AM - 5PM THU: 8AM - 7PM FRI: 8AM - 5PM

TRANSPORTATION

When your transportation needs require more than two wheels, we suggest the following ground transportation companies operating in Northwest Arkansas:

Lyft

Uber

Jim's Express Shuttle & Taxi | (479) 205-0011

Pinnacle Car Services | (479) 205-0505

1st Choice Taxi | (479) 657-0378

Abundant Taxi | (479) 553-8294

DOWNTOWN BENTONVILLE

